



## 6 Park Avenue

Blackhall Colliery, Hartlepool, TS27 4LD

**Offers In The Region Of £104,999**

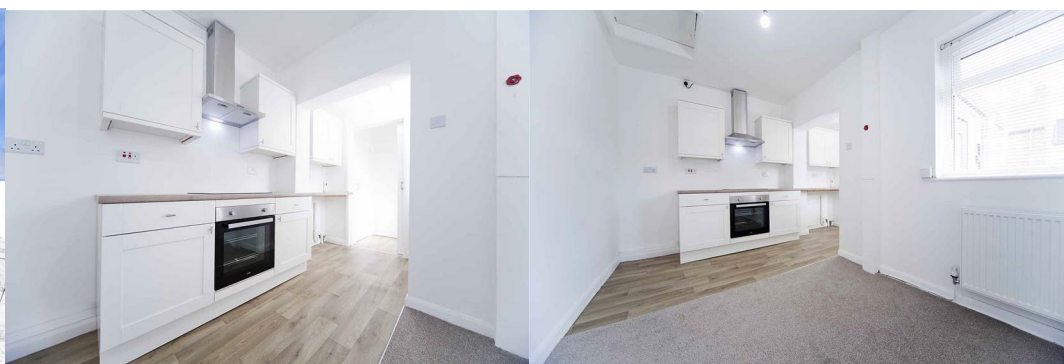


Nestled on the charming Park Avenue in Blackhall Colliery, Hartlepool, this delightful bungalow presents an excellent opportunity for those seeking a modern and comfortable home. With no chain involved, you can move in without delay and start enjoying your new surroundings.

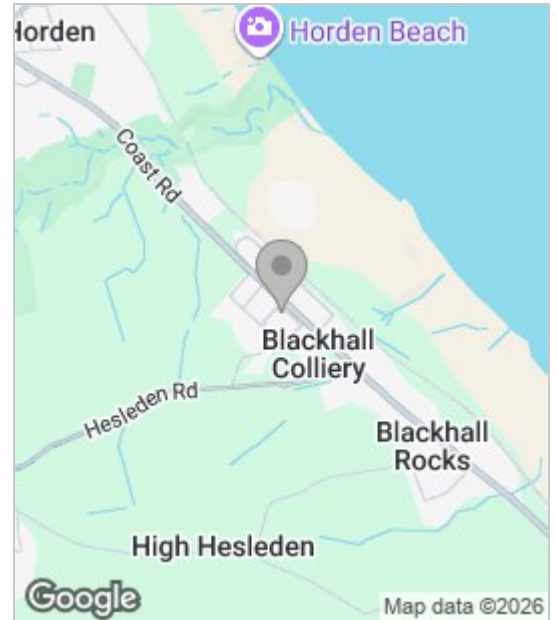
The property has been thoughtfully refurbished, featuring a brand new kitchen and bathroom/wet room that are both stylish and functional. Recent electrical works ensure safety and efficiency throughout the home. Freshly decorated interiors, complemented by new carpets, create a warm and inviting atmosphere, ready for you to personalise.

The garden offers a lovely outdoor space, perfect for relaxation or entertaining guests. Additionally, having some new doors and windows enhance both the aesthetic appeal and energy efficiency of the property.

Conveniently located, this home is just a short distance from local shops and bus routes, making daily errands and commuting a breeze. For those who enjoy the seaside, the beach is also within easy reach, providing a wonderful escape for leisurely walks and family outings.



## Area Map



## Floor Plan



## Energy Efficiency Graph



These particulars, whilst believed to be accurate are set out as a general outline only for guidance and do not constitute any part of an offer or contract. Intending purchasers should not rely on them as statements of representation of fact, but must satisfy themselves by inspection or otherwise as to their accuracy. No person in this firm's employment has the authority to make or give any representation or warranty in respect of the property.